



# SORANO HOTEL

Press

September 30, 2019

Dear Members of the Press and Media:

Tachihi Holdings Co., Ltd.  
Tachihi Hospitality Management Co., Ltd.



Destination Hotel of Tachikawa, Tokyo Scheduled to Open on May 12 (Tuesday), 2020

## SORANO HOTEL

**Online Room Reservations Start at 11 a.m. today, September 30 (Monday), 2019**

**Rooftop Infinity Pool with hot spring water, all 81 rooms over 52 sqm, park view**

Tachihi Holdings Co., Ltd. and Tachihi Hospitality Management Co., Ltd. (both in Tachikawa City, Tokyo / Masamichi Murayama, President) are scheduled to open the SORANO HOTEL, currently under construction, on Tuesday, May 12, 2020 in Tachikawa City, Tokyo. Online room reservations start at 11:00 a.m. today, Monday, September 30, 2019 on the official website (<https://soranohotel.com/en/>).

The SORANO HOTEL is a hotel whose concept is “A Well-being Hotel where the sky, land, and people are one”. As momentum heightens for seeking Well-being (a wholesome experience to invigorate the mind and body), the hotel proposes the “Well-being Short trip”, a new way of travel in which guests can get away from their busy lives in just about 30 minutes from Shinjuku(\*) to relax their mind and body and casually enjoy dining, hot springs, exercise, and other activities.

All rooms are a spacious 52 square meters or more and furnished with a balcony overlooking the Showa Kinen Park located next to the hotel. The hotel’s signature facility is its rooftop Infinity Pool from where guests can enjoy the view of the lush greenery and expansive sky as well as the privately drilled hot spring water.

The interior is designed by Gwenael Nicolas whose work includes GINZA SIX. The interior expresses a new concept of a resort located near central Tokyo that offers experiences in Tokyo that Tokyo had not offered up to now. (\*Approximately 25 minutes by Chuo Special Rapid from JR Shinjuku to Tachikawa Station)

SORANO HOTEL

開業準備室: 〒190-8680 東京都立川市栄町6-1 立飛ビル7号館4階

Hotel pre-opening office: Tachihi bldg. 7, 6-1 Sakae-cho, Tachikawa-shi, Tokyo 190-8680 Tokyo Japan

Tel: 042-536-8888 Fax: 042-536-1121 Mail: [info@soranohotel.com](mailto:info@soranohotel.com)

[soranohotel.com](http://soranohotel.com)

The SORANO HOTEL will open on an approximately 39,000-square-meter plot of land to the north of Tachikawa Station within GREEN SPRINGS (scheduled to open in April 2020), the new city block currently under development by the parent company, Tachihi Holdings Co., Ltd. The hotel imposes no service charges and no extra bed charges for accommodations up to four guests and has selected bedding and amenities with SDGs in perspective from manufacturing to disposal. It is a new way of thinking that is only possible by a small, independent hotel free of the conventions of prevailing hotels to provide a new type of comfort for the upcoming era.

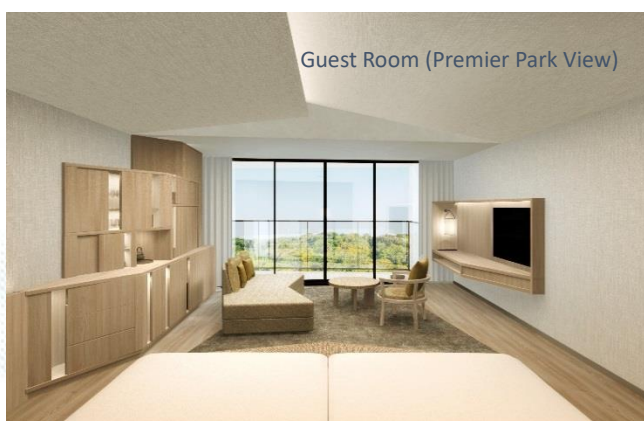
## Features of the SORANO HOTEL

### < Design >

The interior design is by Gwenael Nicolas, a designer originally from France, who has worked globally on worldwide luxury brand and GINZA SIX interiors. A refined, comfortable, natural tone unifies the interior of the hotel. The “tent” motif from the entrance to the lobby expresses freedom and openness for the mind and body with a design reminiscent of camping in the wilderness while being inside a resort hotel.



### < Guest Rooms >



All 81 guest rooms are a spacious 52 square meters or more and furnished with a balcony facing the Showa Kinen Park and an oversized window that gives the rooms an open feel. With the bed situated in the middle of the room and facing the window, the room is set up for luxurious enjoyment of the park view.

The hotel will start selling rooms, such as the Premier Park View that accommodates up to three guests and the stylish Japanese Wa Modern room that accommodates up to four guests. Room rates are per room and are not subject to service charges or extra bed charges for additional guests. The hotel eliminates the supply of disposable, one-time-use amenities as it pursues comfort not only for its guests but for the environment and society. Free from conventional restraints, made possible due to its small, locally-based, and independent nature, the hotel will provide a type of luxury sought by the approaching era.

**【“SORANO HOTEL Grand Opening Package” On Sale Now】 - Available from 39,000 yen (tax separate) per room per night**

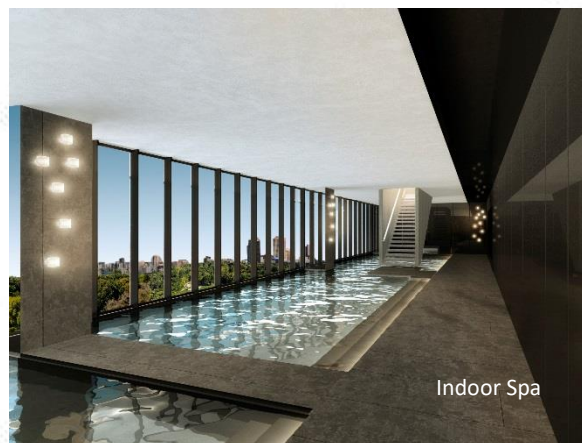
Period: May 12 (Tuesday), 2020 to March 31 (Wednesday), 2021

Details are available for the “SORANO HOTEL Grand Opening Package” and other packages on the official website (<http://soranohotel.com/en/>).



### < Spa “SORANO SPA” >

The greatest feature of SORANO SPA on floors 10 and 11 (rooftop) is the Infinity Pool that stretches approximately 60 meters. Spa goers can feel a stunning sense of freedom with the horizon and sky seeming to melt together and can also see Mt. Fuji on a clear day. The scenery from the adjoining rooftop bar changes every hour. Privately drilled hot spring water is also used at the 10th floor indoor spa facility that includes a hot bathing facility, jacuzzi, nano-mist sauna, and gym studio. (Swimwear must be worn on both floors.)



### < Restaurant “DAICHINO RESTAURANT” >

DAICHINO RESTAURANT works to ensure safety of ingredients and offers dishes and hospitable services that provide wholesome comfort for the “heart” and “society”. The restaurant uses ingredients whose land and climate of production are ideal, natural, and stress-free for developing ingredients with inherent rich flavors. A display shows the producers and roots of such ingredients, which are prepared and served from the open kitchen that exhibits the work of the chefs. The menu items, which are mainly served à la carte, are crossover foods based on Washoku (Japanese cuisine) incorporating international cultures and dishes.

### SORANO HOTEL Overview

Address:	3-1 W1 Midori-cho, Tachikawa City, Tokyo *Within GREEN SPRINGS, the new city block scheduled to open in April 2020
Access:	Approximately 25 minutes from Shinjuku Station to Tachikawa Station on the JR Chuo Line (by Chuo Special Rapid, Ome Special Rapid); 8 minutes on foot from Tachikawa Station
No. of rooms:	81 (each room at least 52 square meters)
Interior design:	Curiosity Inc. (Gwenael Nicolas, President)
Management:	Tachihi Hospitality Management Co., Ltd. (a wholly owned subsidiary of Tachihi Holdings Co., Ltd.) Head office: 6-1 Sakae-cho, Tachikawa-shi, Tokyo President and CEO: Masamichi Murayama COO: Hiroyuki Sakamoto General Manager: Kohei Fukada
Building:	11 floors above ground, 1 floor below ground
Total floor area:	13,251 square meters
Design:	Joint project by Yamashita Sekkei Inc. and Obayashi Corporation
Construction:	Obayashi Corporation

< Inquiries about the SORANO HOTEL >  
SORANO HOTEL Pre-Opening Office, Marketing: Kanako Murayama, Mai Iwamoto  
TEL: 042-536-8888 info@soranohotel.com

Please download the images at the following URL and indicate the copyright notice.

<https://bit.ly/2l21QFh> (Password Expiration Date: 2019. 10. 4/ Password: sorano)

Copyright Gwenael Nicolas/ Curiosity

**Information about GREEN SPRINGS (scheduled to open in April 2020)**

## **A new city block at the JR Tachikawa Station North Exit**



GREEN SPRINGS, the new city block currently under construction by Tachihi Holdings Co., Ltd. (Head Office: Tachikawa City, Tokyo; Masamichi Murayama, President and CEO) is scheduled to open in April 2020 in the Midori Area (3-1 Midori-cho, Tachikawa-shi, Tokyo) to the north of Tachikawa Station. Besides SORANO HOTEL, the block will include TACHIKAWA STAGE GARDEN, the largest next-generation hall in the Tama area with 2,500 seats, with a unique building design that connects the hall's interior and exterior; commercial facilities, and creative offices.

As the needs for humanlike living that is wholesome and comfortable for the mind and body are expected to become more evident after 2020, the concept established for the city block is a “Well-being Town where the sky, land, and people are one”. On top of superb accessibility from the heart of Tokyo, Tachikawa City has foundations set in nature, art, and academia. Making full use of these resources, the town is in development for a life in comfort integrated with nature and culture. With the rest of Japan and the world, Tachikawa shares a new living and bountiful lifestyle sought in the coming era.

## **Activities of Tachihi Holdings Co., Ltd.**

Established in 1924 as its predecessor, Ishikawajima Aircraft Manufacturing Company, Tachihi Holdings Co., Ltd. has been doing business in Tachikawa City for nearly 90 years since moving to Tachikawa in 1930. The company's main real estate business developed LaLaport Tachikawa Tachihi, a large-scale commercial facility in front of Tachihi Station of Tama Monorail, in December 2015. A company rooted in the community, Tachihi Holdings Co., Ltd. contributes to adding value to the Midori Area and the vicinity, undertaking the Tachihi Midori Area Urban Development Project, the large-scale development project following Lalaport Tachikawa Tachihi, together with the participation of businesses and local residents in Tachikawa City and the surrounding area.